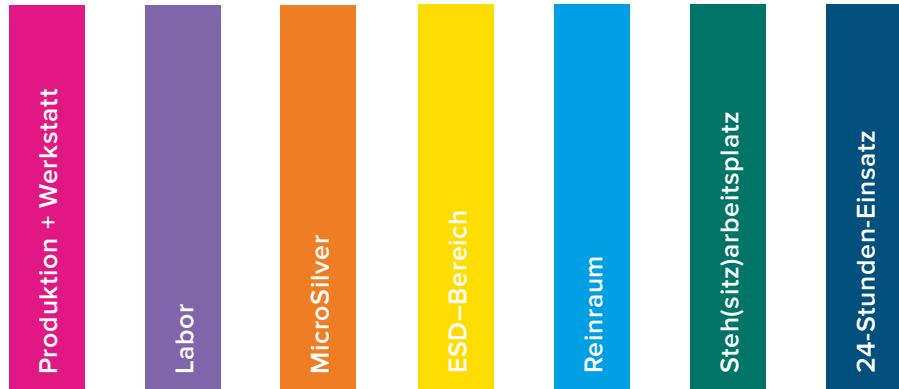
















Empfohlene Bezugstoffe



Preisgruppe	Bezugstoffe							
P	Fabio	○					○	
A	Charlotta ⚡				●			
A	Relax	●					●	○
A	King	●					●	○
A	King Plus	●					●	○
A	Valencia Kunstleder	○	●			○*	●	
A	Madrid ⚡ Kunstleder				●	●		
B	Silvertex® Kunstleder	○	●	●			●	
B	Parotega NF Kunstleder	○	●			○*	●	
B	Fame	●					●	●
B	Decade	●					○	●
E	Leder							●
F	Premium-Leder							●

*Tec profile
(nicht leitfähig)

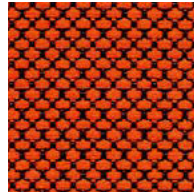
Preisgruppe	Oberflächen							
siehe Preisgruppe	Holz	●						
siehe Preisgruppe	PU (Polyurethan)	●	●		●	●	●	
siehe Preisgruppe	PP (Polypropylen)		●	●				

- Bezugsmaterial besonders geeignet
- Bezugsmaterial geeignet

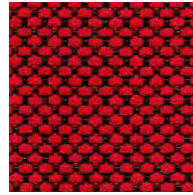
Stoffe

Fabio: P

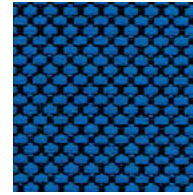
Zusammensetzung: 100 % Polyester FR
 Gewicht: ca. 560 g/m
 Breite: 140 cm
 Lichtechtheit: Note 5 - 8
 (DIN EN ISO 105-B02)
 Pilling: Note 5
 (DIN EN ISO 12945/2)
 Reibechtheit: nass 4 - 5 / trocken 4 - 5
 (DIN EN ISO 105-X12)
 Scheuerfestigkeit: 80.000 Touren
 (Martindale; DIN EN ISO 12947-2)
 Brandverhalten: DIN EN 1021: Teil 1/2,
 DIN 4102 B1, NF-P 92-503 Klasse M1,
 BS 5852 IS 0+1, Crib 5,
 UN2 9175/87 (1. IM)



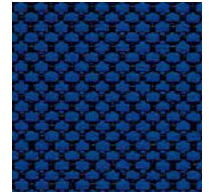
012.044
Orange



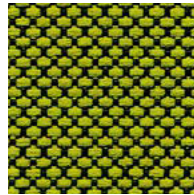
012.040
Chilliroth



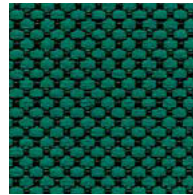
012.019
Indigoblau



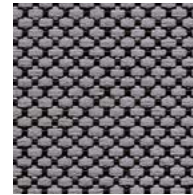
012.022
Dunkelblau



012.011
Hellgrün



012.110
Dunkelgrün



012.031
Platingrau



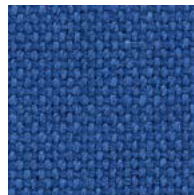
012.033
Schwarz

Charlotta: A

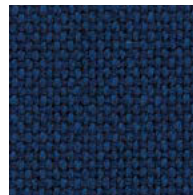
Zusammensetzung: 70 % Polypropylen,
 29 % Wolle, 1 % BASF Resistat
 Gewicht: ca. 500 g/m
 Breite: 140 cm
 Lichtechtheit: Note 5
 (DIN EN ISO 105-B02)
 Reibechtheit: nass 4 / trocken 4
 Scheuerfestigkeit: 60.000 Touren
 (Martindale; DIN EN ISO 12947)
 Brandverhalten: DIN EN 1021: Teil 1/2



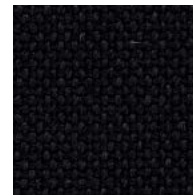
⚡ = leitfähig



044.025 ⚡
Wasserblau



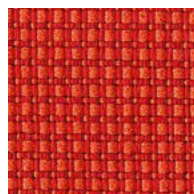
044.022 ⚡
Dunkelblau



044.033 ⚡
Schwarz

Relax: A

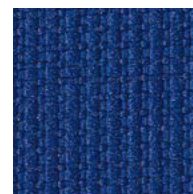
Zusammensetzung: 100 % Trevira CS® (Polyester)
 Gewicht: ca. 450 g/m
 Breite: 140 cm
 Lichtechtheit: Note 6
 (DIN EN ISO 105-B02)
 Pilling: Note 5
 (DIN EN ISO 12945/2)
 Reibechtheit: nass 4 - 5 / trocken 4 - 5
 (DIN EN ISO 105-X12)
 Scheuerfestigkeit: 100.000 Touren
 (Martindale; DIN EN ISO 12947)
 Brandverhalten: DIN EN 1021: Teil 1/2,
 DIN 4102 B1, NF-P 92-503 Klasse M1,
 BS 5852 IS 0+1, Crib 5,
 UN2 9175/87 (1. IM)



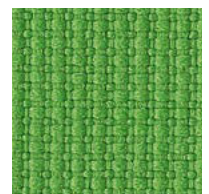
103.044*
Orange



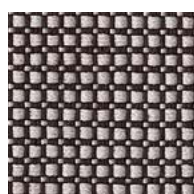
100.041
Feuerrot



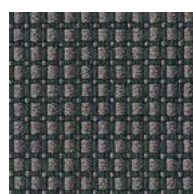
100.020
Standardblau



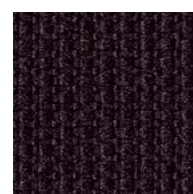
100.010
Grün



103.079*
Schwarz und Weiß



103.039*
Javagrau



100.033
Schwarz

*Relax bico (zweifarbzig)

Stoffe

King: A

Zusammensetzung: 100 % Trevira CS®
(Polyester)
Gewicht: ca. 420 g/m
Breite: 140 cm
Lichtechtheit: Note 6
(DIN EN ISO 105-B02)
Pilling: Note 4 - 5
(DIN EN ISO 12945/2)
Reibechtheit: nass 4 - 5 / trocken 4 - 5
Scheuerfestigkeit: 100.000 Touren
(Martindale; DIN EN ISO 12947)
Brandverhalten: DIN EN 1021: Teil 1/2,
DIN 4102 B1, NF-P 92-503 Klasse M1,
BS 5852 IS 0+1, Crib 5,
UN2 9175/87 (1. IM)



**TREVIRA®
CS**



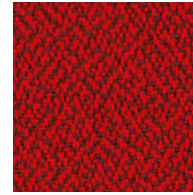
**TEXTILES
VERTRAUEN**
Geprüft auf Schadstoffe
nach Oeko-Tex® Standard 100
073313.0 CENTROCO



081.044
Orange



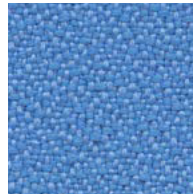
081.041
Feuerrrot



081.040
Chilliroot



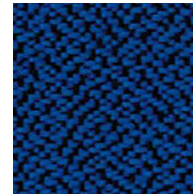
081.042
Rubinrot



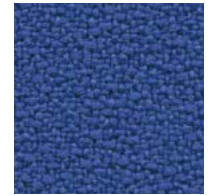
081.120
Hellblau



081.021
Azurblau



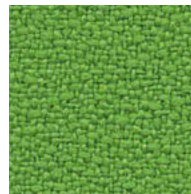
081.020
Standardblau



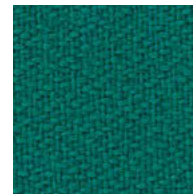
081.025
Wasserblau



081.011
Hellgrün



081.010
Grün



081.110
Dunkelgrün



081.022
Dunkelblau



081.031
Platingrau



081.032
Steingrau



081.030
Grau



081.033
Schwarz

King Plus: A

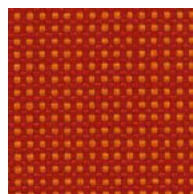
Zusammensetzung: 100 % Trevira CS®
(Polyester)
Gewicht: ca. 365 g/m
Breite: 140 cm
Lichtechtheit: Note 6
(DIN EN ISO 105-B02)
Pilling: Note 4 - 5
(DIN EN ISO 12945/2)
Reibechtheit: nass 4 - 5 / trocken 4 - 5
Scheuerfestigkeit: 80.000 Touren
(Martindale; DIN EN ISO 12947)
Brandverhalten: DIN EN 1021: Teil 1/2,
DIN 4102 B1, NF-P 92-503 Klasse M1,
BS 5852 IS 0+1, Crib 5,
UN2 9175/87 (1. IM)



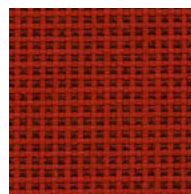
**TREVIRA®
CS**



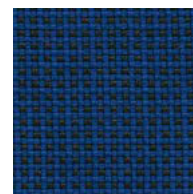
**TEXTILES
VERTRAUEN**
Geprüft auf Schadstoffe
nach Oeko-Tex® Standard 100
073313.0 CENTROCO



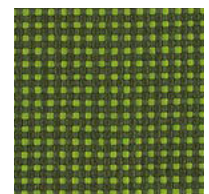
084.044
Orange



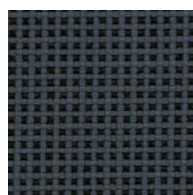
084.040
Chilliroot



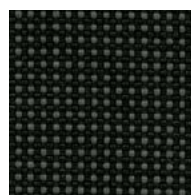
084.022
Dunkelblau



084.011
Hellgrün



084.030
Grau



084.033
Schwarz

Stoffe

Valencia: A

Sehr robustes Kunstleder, langlebig,
desinfektionsmittelbeständig

Zusammensetzung:

Beschichtung: 100 % Vinyl/

Träger: 100 % Polyester Hi-Loft^{2TM}

Gewicht: ca. 650 g/m²

Breite: 137 cm

Lichtechtheit: Note 5

(DIN EN ISO 105-B02)

Scheuerfestigkeit: 300.000 Touren

(Martindale; DIN EN ISO 12947-2)

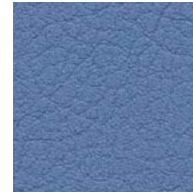
Brandverhalten: DIN EN 1021: Teil 1/2,
NF-P 92-503 Klasse M2,
DIN 4102 B2



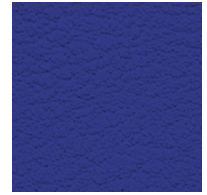
006.001
Leuchtgelb



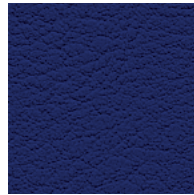
006.040
Chillirrot



006.025
Wasserblau



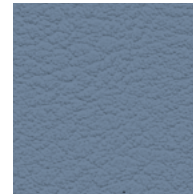
006.020
Standardblau



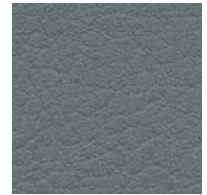
006.022
Dunkelblau



006.010
Grün



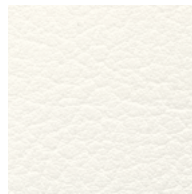
006.030
Grau



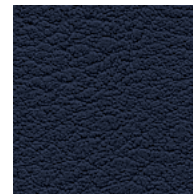
006.031
Platingrau



006.070
Polarweiß



006.073
Reinweiß



006.033
Schwarz

Madrid: A

Kunstleder leitfähig

Zusammensetzung: 89 % PVC-Compound,
11 % PES/BW

Gewicht: ca. 650 g/m²

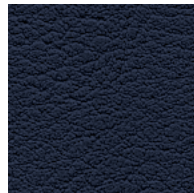
Breite: 137 cm

Reibechtheit: nass 4 / trocken 4
(DIN EN ISO 105-X12)

Scheuerfestigkeit: 40.000 Touren
(Martindale; DIN EN ISO 5470-2)



⚡ leitfähig



013.033 ⚡
Schwarz

Silvertex®: B

**Antimikrobiell, chemikalienbeständig*,
flammhemmend, wasserabweisend**

Zusammensetzung:

Beschichtung: 100 % Vinyl/

Träger: 100 % Polyester Hi-Loft^{2TM}

Gewicht: 685 g/m²

Breite: 137 cm

Lichtechtheit: Note 6 (Blauwollskala)

Scheuerfestigkeit: 300.000 Touren

(Martindale; DIN EN ISO 12947-2)

Brandverhalten: DIN EN 1021: Teil 1/2,
NF-P 92-503 Klasse M2,
DIN 4102 B2

* empfohlene Desinfektionsmittel auf Anfrage



011.073
Reinweiß



011.019
Indigoblau



011.033
Schwarz



Stoffe

Parotega NF: B



Desinfektionsmittelbeständig*, schwer entflammbar, angenehme Haptik
 Zusammensetzung: 83 % PVC-Compound,
 17 % Baumwolle

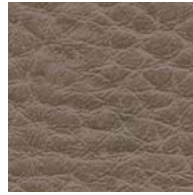
Gewicht: ca. 700 g/m²
 Breite: 137 cm
 Lichtechtheit: Note 5
 (DIN EN ISO 105-B02)

Reibechtheit: nass 4 / trocken 4 - 5
 (DIN EN ISO 105-X12)

Scheuerfestigkeit: 50.000 Touren
 (Martindale; DIN EN ISO 12947-2)

Brandverhalten: DIN EN 1021: Teil 1/2,
 DIN 4102 B1, NF-P 503 Klasse M1,
 BS 5852 IS 0+1, Crib 5, UN2 9175/87 (1. IM)

* empfohlene Desinfektionsmittel auf Anfrage



039.052
Fango



039.042
Rubinrot



039.033
Schwarz

Fame: B

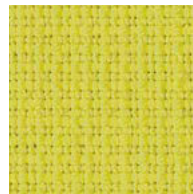
Zusammensetzung: 95 % New Zealand-Wolle,
 5 % Polyamid

Gewicht: ca. 630 g/m²
 Breite: 140 cm
 Lichtechtheit: Note 5 - 7
 (DIN EN ISO 105-B02)

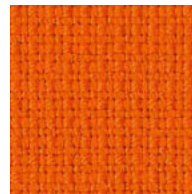
Pilling: Note 4
 (DIN EN ISO 12945/2)

Reibechtheit: nass 4 - 5 / trocken 4 - 5
 Scheuerfestigkeit: 200.000 Touren
 (Martindale; DIN EN ISO 12947-2)

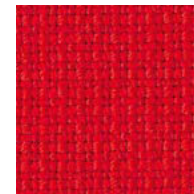
Brandverhalten: DIN EN 1021: Teil 1/2



078.022
Limonengelb



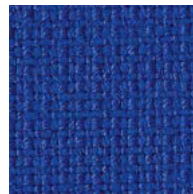
078.044
Orange



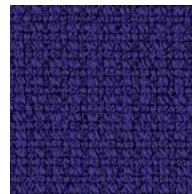
078.041
Feuerrot



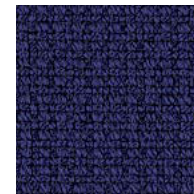
078.040
Chillrot



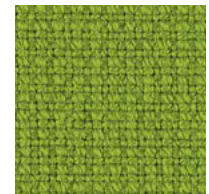
078.027
Königsblau



078.020
Standardblau



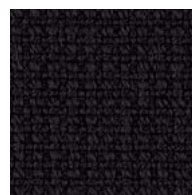
078.022
Dunkelblau



078.010
Grün



078.036
Anthrazitgrau



078.033
Schwarz



Decade: B

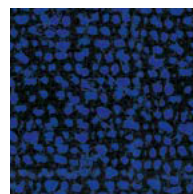


Speziell für hohe Beanspruchung
 Zusammensetzung: 50 % Polyamid,
 33 % Schurwolle,
 10 % Visil, 7 % Viskose

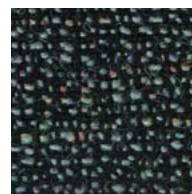
Gewicht: ca. 610 g/m²
 Breite: 140 cm
 Lichtechtheit: Note 6
 (DIN EN ISO 105-B02)

Reibechtheit: nass 4 / trocken 4
 Scheuerfestigkeit: 500.000 Touren
 (Martindale; DIN EN ISO 12947)

Brandverhalten: DIN EN 1021: Teil 1/2



040.022
Dunkelblau



040.035
Graphitgrau



040.038
Lavagrau



040.033
Schwarz

Leder/Materialien

Leder: E

Anilingefärbtes leicht mit Pigmentfarbe abgedecktes Rindsoberleder, sehr strapazierfähig, vollnarbig.

Nappaleder pigmentiert (Semi-Anilinleder)

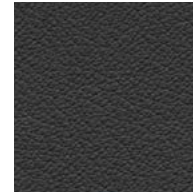
Lichtechtheit: Note 3
(DIN EN ISO 105-B02)
Reibechtheit: nass 4 - 5 / trocken 4 - 5
(DIN EN ISO 11640)
Brandverhalten: DIN EN 1021: Teil 1/2



001.052
Fango



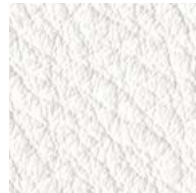
001.069
Terrabraun



001.035
Graphitgrau



001.072
Kaschmirweiß



001.070
Polarweiß



001.033
Schwarz

Leder: F

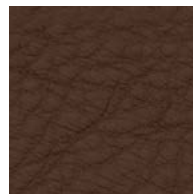
Feinstes, naturbelassenes Nappaleder. Anilingefärbtes Rindsoberleder der Spitzenklasse. Mit natürlichen Ölen behandelt, tuchweicher Griff, atmungsaktiv, hautsympathisch, feuchtigkeitsregulierend. Wasserlösliche Farben ohne chemische Lösungsmittel.

Premium Echt-Leder

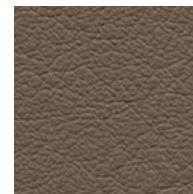
Lichtechtheit: Note 4
(DIN EN ISO 105-B02)
Reibechtheit: nass 4 / trocken 3 - 4
(DIN EN ISO 11640)
Brandverhalten: DIN EN 1021: Teil 1/2



029.041
Feuerrot



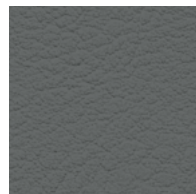
029.061
Dunkelbraun



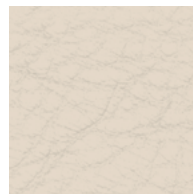
029.052
Fango



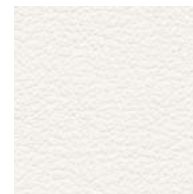
029.027
Königsblau



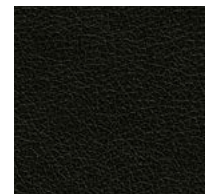
029.036
Anthrazitgrau



029.072
Kaschmirweiß



029.073
Reinweiß



029.033
Schwarz

Holz

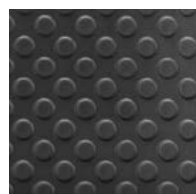
Arbeitsstühle



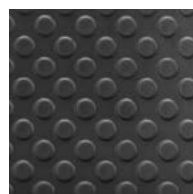
HBN
Buche natur

PU (Polyurethan)

Arbeitsstühle



PURGS
PU schwarz
Tec profile



PUSGS
PU soft, schwarz
Tec profile,
Tec profile XS



PUSXS
PU soft, silber
Tec profile



PURGS
PU schwarz
Tec basic