

# GEIGER

## TEXTILES

### Kalista

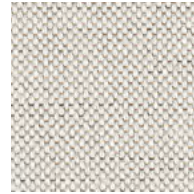
DESIGNED BY BASSAMFELLOWS

APPLICATION	Seating, Geiger Tackboards
CONTENT	71% Post-Industrial Recycled Cotton, 18% Post-Industrial Recycled Polyester, 11% Polyester
FINISH	PFOA-Free Stain Resistant
WIDTH	54"
REPEAT	None
ABRASION	90,000 Double Rubs, Wyzenbeek*
FLAMMABILITY	CA TB 117-2013
WEIGHT	20.8 Oz Per Linear Yard
ORIGIN	United States
ENVIRONMENTAL	SCS Indoor Advantage™ Gold Contains Bio-Based Materials Contains Recycled Content FR Chemical Free Prop 65 Chemical Free
MAINTENANCE	S – Clean with Mild, Dry Cleaning Solvent
CUSTOM FINISHES	Acrylic Backing/PFOA-Free Stain Resistant Finish; Alta; Alta Food & Beverage; Alta Workplace; Nanotex; Nanotex with Impermeable Barrier
PRICE GROUP	4
NET PRICE	\$42 Per Yard

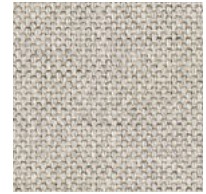
\*Abrasion test results exceeding ACT Performance Guidelines are not an indicator of product lifespan. Multiple factors affect fabric durability and appearance retention.



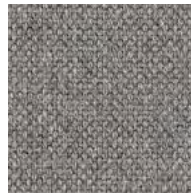
1AL01 Cotton



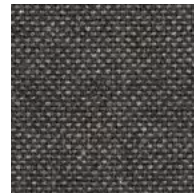
1AL02 Natural



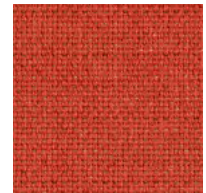
1AL03 Titanium



1AL04 Pewter



1AL05 Starry Night



1AL06 Red Hot



1AL07 Sun Kissed



1AL08 Dune



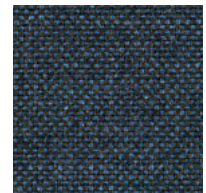
1AL09 Beach Glass



1AL10 Bluestone



1AL11 Seaside



1AL12 Night Sky

# GEIGER

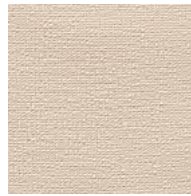
## TEXTILES

### Ottoman

DESIGNED BY SUSAN LYONS

APPLICATION	Seating, Geiger Tackboards, Upholstered Walls
CONTENT	100% Post-Consumer Recycled Polyester
FINISH	GreenShield
WIDTH	54"
REPEAT	None
ABRASION	100,000 Double Rubs, Wyzenbeek*
FLAMMABILITY	CA TB 117-2013; ASTM E84 Unadhered, Class A
WEIGHT	16 Oz Per Linear Yard
ORIGIN	Canada
ENVIRONMENTAL	SCS Indoor Advantage™ Gold Contains Recycled Content FR Chemical Free Prop 65 Chemical Free REACH Compliant
MAINTENANCE	W/S – Clean with Water-Based Cleanser, or Mild, Dry Cleaning Solvent
CUSTOM FINISHES	Acrylic Backing/PFOA-Free Stain Resistant Finish; Alta; Alta Food & Beverage; Alta Workplace; Antimicrobial Stain Resistant Finish with Impermeable Barrier; Nanotex; Nanotex with Impermeable Barrier
PRICE GROUP	4
NET PRICE	\$42 Per Yard

\*Abrasion test results exceeding  
ACT Performance Guidelines are not  
an indicator of product lifespan.  
Multiple factors affect fabric durability  
and appearance retention.



19710 Cream



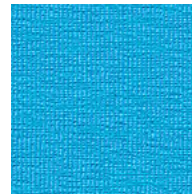
19711 Camel



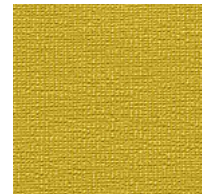
19712 Vicuna



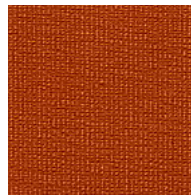
19713 Stone



19719 Aqua



19720 Citron



19721 Luggage



19728 Ruby



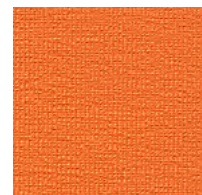
19729 Currant



19730 Red



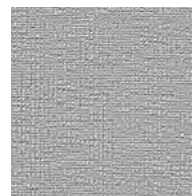
19731 Blaze



19732 Persimmon



19748 Titanium



19749 Pewter

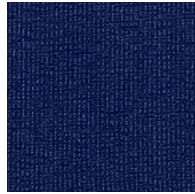


19750 Oxford

Ottoman



19751 Cadet



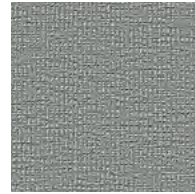
19752 Blue



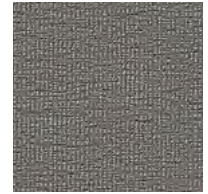
19760 Willow



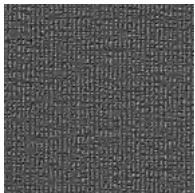
19761 Napa



19767 Sterling



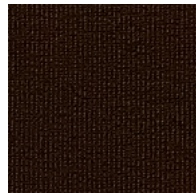
19768 Flint



19769 Slate



19770 Trench



19771 Java



19777 Deep Sea



19778 Navy



19779 Metal



19780 Black

# GEIGER

## TEXTILES

### Tenera

APPLICATION	Seating
CONTENT	European Full Grain Semi-Aniline Dyed Cowhide, Enhanced for Uniform Grain
TANNING	Chrome-Free, Synthetic Vegetable
FINISH	Breathable Water-Based Protective Topcoat
AVERAGE HIDE	50-55 Square Feet
FLAMMABILITY	CA TB 117-2013
WEIGHT	3.5 Oz Per Square Foot
THICKNESS	1.5 mm +/- .1 mm
ORIGIN	Austria
ENVIRONMENTAL	SCS Indoor Advantage™ Gold FR Chemical Free Heavy Metal Free Prop 65 Chemical Free OEKO-TEX® Certified REACH Compliant Healthier Hospitals Compliant Living Future Red List Compliant WELL Building Standard Compliant
PRICE GROUP	11
NET PRICE	\$13 Per Square Foot



17501 Cement



17502 Marzipan



17503 Sunglow



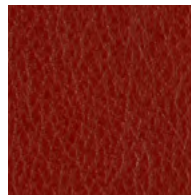
17504 Raw Sienna



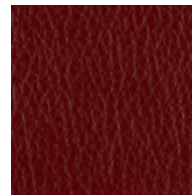
17505 Maple



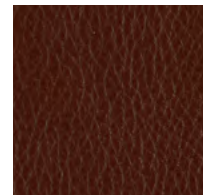
17506 Poppy



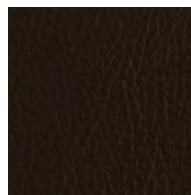
17507 Salsa



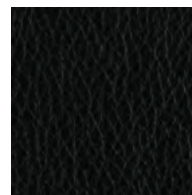
17508 Cranberry



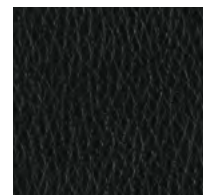
17509 Burnt Sienna



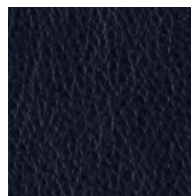
17510 Dark  
Chocolate



17511 Black



17512 Carbon



17513 Sapphire

## Leather

Herman Miller

Composition:  
Leather 100%

Application:  
Hide Size: Approximately 50 square feet. Non-directional  
Weight: 233g/m<sup>2</sup> (2.5 ounces/square foot)  
Price Band 9

Standards:  
Abrasion: Wyzenbeek, 100,000 double rubs  
Flammability: CA TB 117, NFPA 260  
Light Fastness: Grade 4, 40 hours

Colour Matching: Batch to batch variations in shade may occur within commercial tolerances.

Maintenance: Vacuum regularly. Wipe clean with a damp cloth.



Alpine  
2115



Ivory  
2101



Khaki  
2113



Clay  
2112



Truffle  
2114

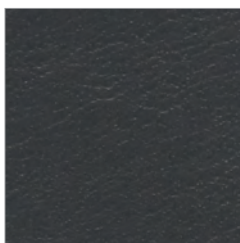
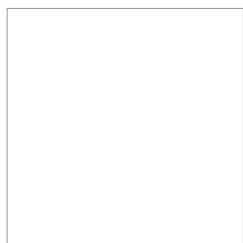


Haze  
2116

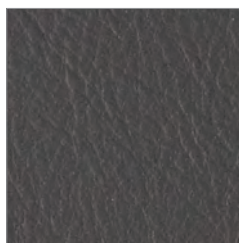


Cranberry  
2120

## Leather



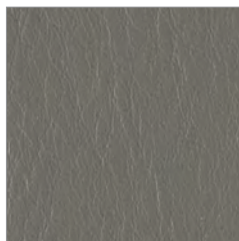
Carbon  
2119



Graphite  
2111



Dark Mineral  
2118



Smoke  
2110



Sable Grey  
2117



Deep Sea  
2121