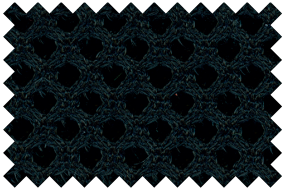
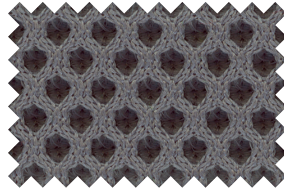


**RUNNER** / NETZ / MESH

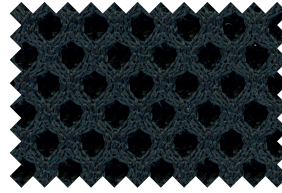
**STOFFGRUPPE NETZ / MESH FABRIC GROUP**



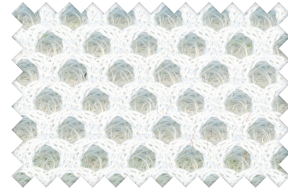
852 schwarz / black



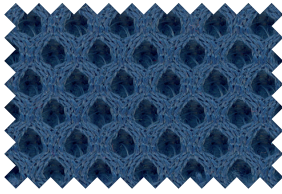
854 grau / grey



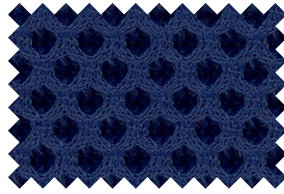
864 dunkelgrau / dark grey



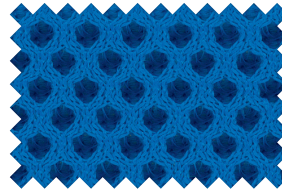
853 weiß / white



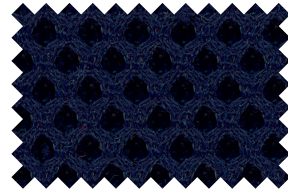
858 capriblau / capri blue



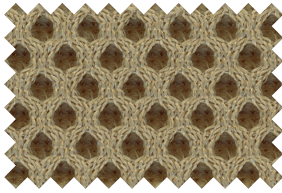
862 royalblau / royal blue



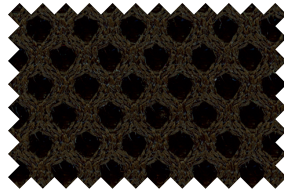
856 blau / blue



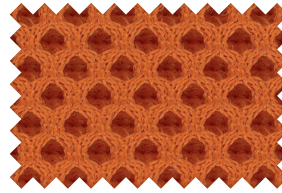
861 dunkelblau / dark blue



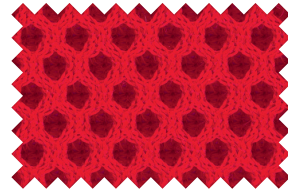
866 sand / sand



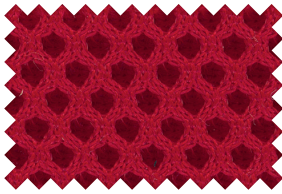
865 braun / brown



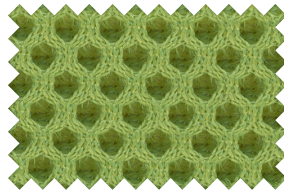
863 orange / orange



855 rot / red



859 dunkelrot / dark red



857 hellgrün / light green

<b>Gewicht in Gramm / laufender Meter</b> <i>Weight per running meter</i>	<b>510 g / lm</b>
<b>Breite / Width</b>	<b>160 cm</b>
<b>Lichtechtheit / Colour fastness</b>	<b>5 - 7</b>
<b>Reibechtheit Trocken / Nass</b> <i>Colour fastness to rubbing dry / wet</i>	<b>4 - 5</b>
<b>Scheuerfestigkeit in Scheuertouren (nach Martindale)</b> <i>Abrasion resistance (rubs Martindale)</i>	<b>70.000</b>

**Feuersicherung nach / Flammability**

- EN 1021-1 & 2
- UNI 9175 Class 1 | EMME



**Wissenswertes über Runner:**

- 100 % Polyester
- Oeko-Tex 100 zertifiziert

**Useful information about Runner:**

- 100 % Polyester
- Oeko-Tex 100 certified

